



*Florida Department of Transportation*

RICK SCOTT  
GOVERNOR

605 Suwannee Street  
Tallahassee, FL 32399-0450

MIKE DEW  
SECRETARY

October 10, 2017

Patricia M. Steed, Staff Services Director  
Heartland Regional Transportation Planning Organization  
555 East Church Street, Bartow, FL 33830  
ATTN: Marybeth Soderstrom

**RE: Request for Amendments to the Heartland Regional Transportation Planning Organization's (HRTPO) FY 2017/2018 through FY 2021/2022 Transportation Improvement Program (TIP)**

Dear Ms. Steed:

The purpose of this letter is to request the HRTPO to approve amendments to the Transportation Improvement Program (TIP) FY 2017/18 through 2021/22 at their November 1, 2017 meeting.

These amendments are necessary to ensure authorization of federal funds in the current Fiscal Year 2017/2018. Please see the attached table for project details.

If you have any questions or concerns, please let me know.

Lori D. Carlton

Community Liaison

LDC:lc

cc: Ben Dunn, HRTPO  
Marybeth Soderstrom, HRTPO  
Bob Crawley, HRTPO  
Bessie Reina, FDOT



# Connect Local Areas and Provide Choices On How To Travel



## What should be done

- » Plan for and design multimodal transportation systems providing mobility options which are accessible by all users.
- » Improve connectivity between major activity centers in the Heartland Region.
- » Ensure consistency with the comprehensive plans of local governments within the Heartland Region, and other applicable regional plans.

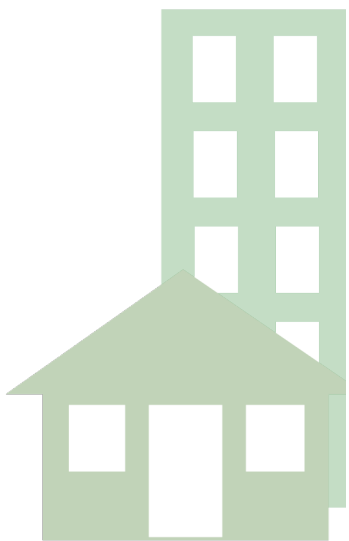
## How we keep track

- » Accessible public transit
- » Access to major activity centers
- » Comprehensive plans

## How we measure success

- » Number of accessible vehicles in public transit provider fleets
- » Percent of residential population within a 10 minute travel time of major activity centers
- » Local government comprehensive plans consistent with L RTP

# Create Quality Places To Live And Work



## What should be done

- » Coordinate land use and transportation planning decisions to support modal choice.
- » Support multimodal facilities that are user friendly, encourage mobility, and promote healthy and active lifestyles.
- » Protect and preserve the environment.
- » Provide for the needs of the general populations including the Transportation Disadvantaged (TD) and improve the coordination of TD services with other modes of transportation.

## How we keep track

- » Jobs-housing balance
- » Multi-use trails
- » Roadway construction in environmentally significant areas
- » Public and Transportation Disadvantaged services

## How we measure success

- » Jobs to household ratio
- » Number of miles of multi-use trails
- » Number of regional roadway miles impacting environmentally significant areas
- » Total number of trips on public transit and transportation disadvantaged providers

# Provide Reliable And Efficient Transportation Options



## What should be done

- » Reduce traffic congestion and delay.
- » Preserve existing transportation facilities.
- » Optimize the utilization of existing transportation facilities.
- » Coordinate transportation investments to maximize opportunities and benefits.

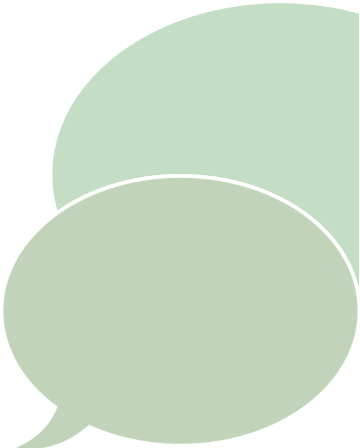
## How we keep track

- » Daily Vehicle Miles Traveled (VMT)
- » Pavement conditions
- » Operational efficiency
- » Regional priorities

## How we measure success

- » VMT per capita
- » Number of regional roadways below standard pavement sufficiency rating
- » Miles of regional roadways over capacity
- » Develop regional priorities for transportation investments

# Encourage Everyone to Participate in the Planning Process



## What should be done

- » Promote proactive and early public involvement and provide diverse opportunities to maximize public participation.

## How we keep track

- » Workshops
- » Focus groups
- » Committee meetings
- » Electronic communications

## How we measure success

- » Number of workshops
- » Number of focus groups
- » Number of meetings
- » Number of electronic communications

*Moving to the future development of a fully multimodal transportation system in the Heartland will require a comprehensive data tracking procedure to set and evaluate specific targets for incremental achievements of success towards Objectives. Tasks to address the system data needed are addressed in the Unified Planning Work Program for establishing baselines for the HRTPO.*