

Technical Advisory Committee (TAC)

May 15, 2019

CareerSource Heartland

Sebring, FL

1) Call to Order

- **Roll Call**
- **Announcements**

2) Public Comment

3) Approval of Minutes*

March 20, 2019 Meeting

4) Transportation Improvement Program (TIP)*

Page 7



Transportation Improvement Program

FISCAL YEARS 2019/20 - 2023/24

Draft: May 10, 2019

The preparation of this document has been financed in part through a grant from the U.S. Department of Transportation (Federal Highway Administration) in cooperation with the Florida Department of Transportation, the urbanized area of Highlands County including the cities of Sebring and Avon Park; and the counties of DeSoto, Glades, Hardee, Hendry, Highlands and Okeechobee.

heartlandregionaltpo.org

Transportation Improvement Program (TIP)

- Outlines the roadways, bridges, transit, aviation, rail, trail/bicycle/pedestrian facilities, and landscaping projects
- Five years through 2024
- DeSoto, Glades, Hendry, Hardee, Highlands, and Okeechobee

Draft TIP for 2019/20 through 2023/24

Current TIP

- FY 2018/19 – 2022/23
- Current TIP

Next TIP

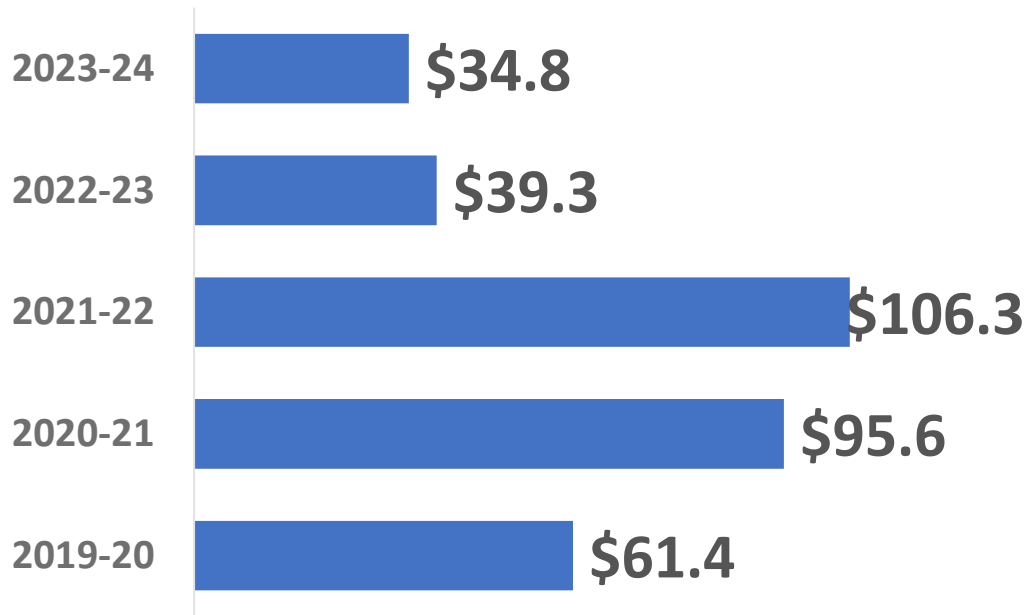
- FY 2019/20 - 2023/24
- Next TIP
- Adopt June 19

Project Priorities

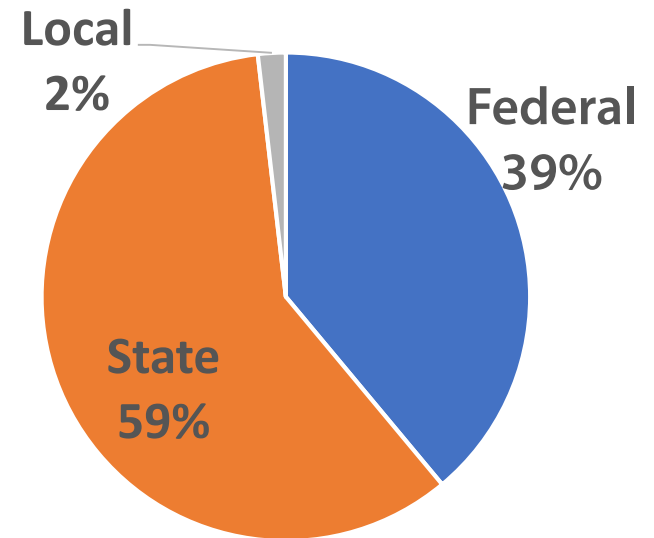
- FY 2024/25
- Under development
- Adopt June 19

For the development of the FY 2020/21 – 2024/25 TIP (June 2020)

Project Revenue Summaries



In Millions



2019/20 - 2023/24 Total:

\$337,409,431

Performance Management

Safety

Pavement
and Bridge

System
Performance

Transit Asset
Management

National Goals

HRTPO Long Range Plan Goals

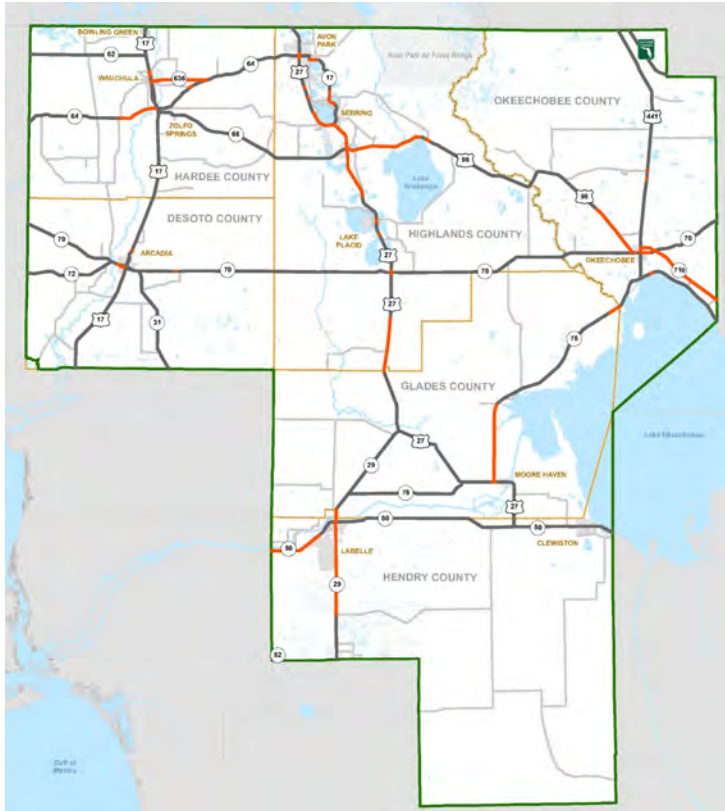
Performance Measures and Targets

HRTPO Evaluation Criteria

Project Priorities and Developed Work Program

Transportation Improvement Program

Project Listings



Available at www.heartlandregionaltpo.org



May 10 – June 9 Public Comment Period

- Distributed to government offices, CareerSource offices, and libraries
- Online Mapping Tool and comment box
- Facebook Ads

Requested Action

Recommend the Transportation Improvement Program for 2019/20 through 2023/24 to the HRTPO Board for adoption

5) Transportation Project Application Priority List*

Page 99

Process for Priority Selection

- ✓ Project submission to HRTPO
- ✓ Project review by HRTPO staff
- ✓ Project submittal to FDOT
- ✓ Preliminary score review by local jurisdiction
- ✓ Project review by TAC and CAC
- ✓ Project review by HRTPO
- Ranking endorsement by TAC and CAC
- Priority List Adoption by HRTPO

Evaluation Criteria Capacity Projects

Improve Safety

30%

**Provide
Reliable and
Efficient
Options**

40%

**Support
Economic
Development**

20%

**Connect Areas &
Provide Choices**

5%

**Create Quality
Places**

5%

Evaluation Criteria Capacity Projects

Rank	Jurisdiction	Facility	From	To	Description
1	Highlands	US 98	US 27	E of Airport Rd	2 to 4 Lanes
2	DeSoto	CR 769 (Kings Highway)	DeSoto C/L	Peace River St	2 to 4 Lanes
3	DeSoto	SR 31 Extension	SR 70	US 17	New Road
4	Okeechobee	SR 710	US 98	US 441	New Road

Evaluation Criteria

Congestion Management Projects

Improve Safety

40%

**Provide
Reliable and
Efficient
Options**

40%

**Create Quality
Places**

20%

Congestion Management Projects

Rank	Jurisdiction	Project Location	Description
1	City of Okeechobee	N 9th St and US 441	Signalization

The project is to install traffic signalization in the intersection of Parrott St. (US Hwy 441) and NE/NW 9th St. in Okeechobee, FL. Project includes new signal system including mast arms, and Rail Road preemption for the rail crossing approximately 300' South of the intersection.

Evaluation Criteria

Transportation Alternatives Projects

Improve Safety

40%

**Provide
Reliable and
Efficient
Options**

50%

**Create Quality
Places**

10%

Transportation Alternatives Projects

Rank	Jurisdiction	Project Location	Project Type
1	DeSoto	SE Maple Drive	Sidewalk
2	Highlands	E O Douglas Ave.	Multi-Use Path
3A	DeSoto	SW Kingsway Circle	Sidewalk
3B	Hendry	Cowboy Way	Sidewalk
4A	Highlands	Cemetery Rd.	Multi-Use Path
4B	Highlands	Catfish Creek Rd.	Multi-Use Path
5	Highlands	School St.	Multi-Use Path
6	Highlands	Desoto Rd.	Multi-Use Path
7A	City of LaBelle	SR80 West	Lighting
7B	Hendry	Harlem Academy Blvd	Sidewalk

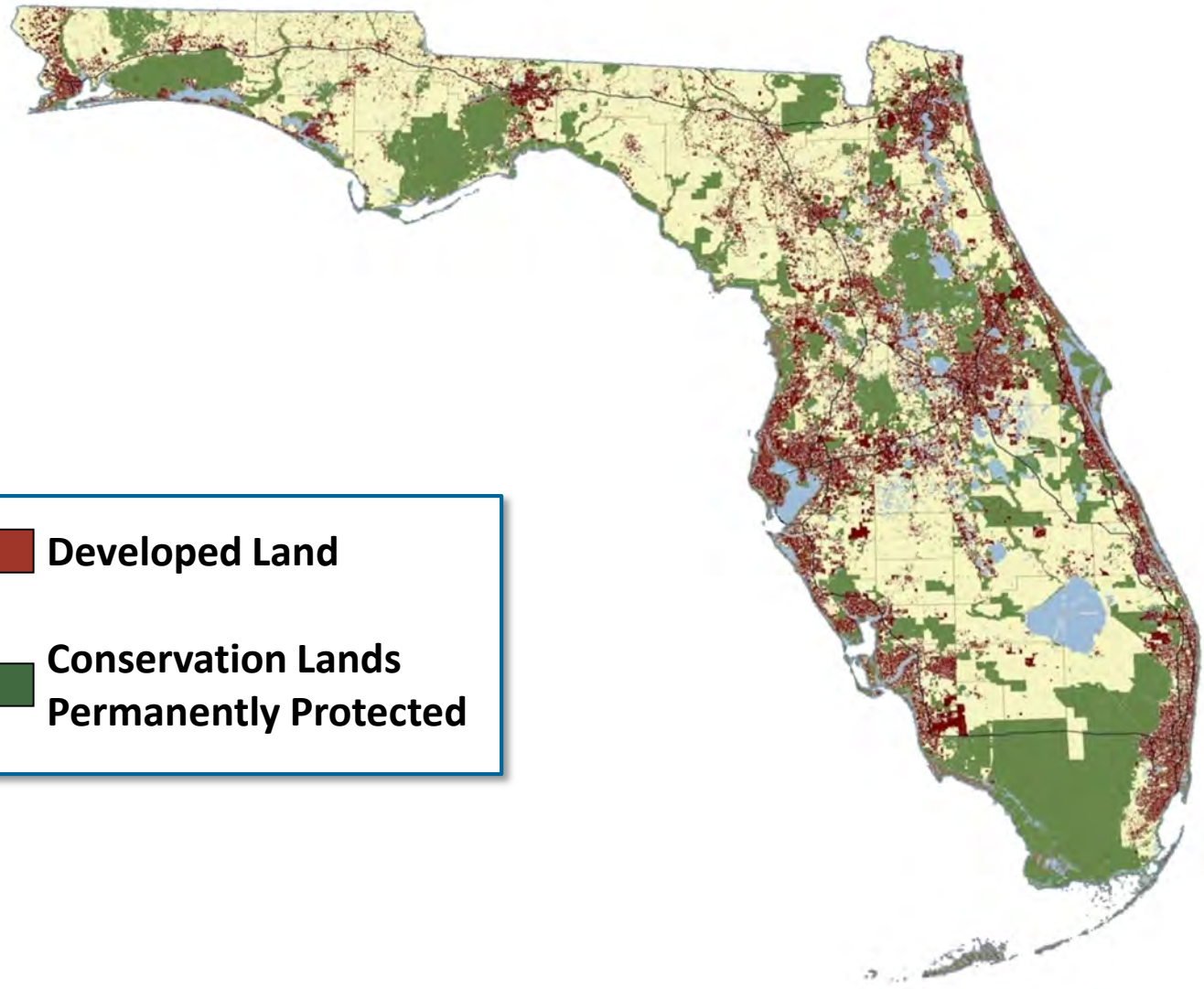
Requested Action


Endorse and recommend priority rankings to the HRTPO for adoption

6) Heartland 2060 & Multi-Use Corridors of Regional Economic Significance Program

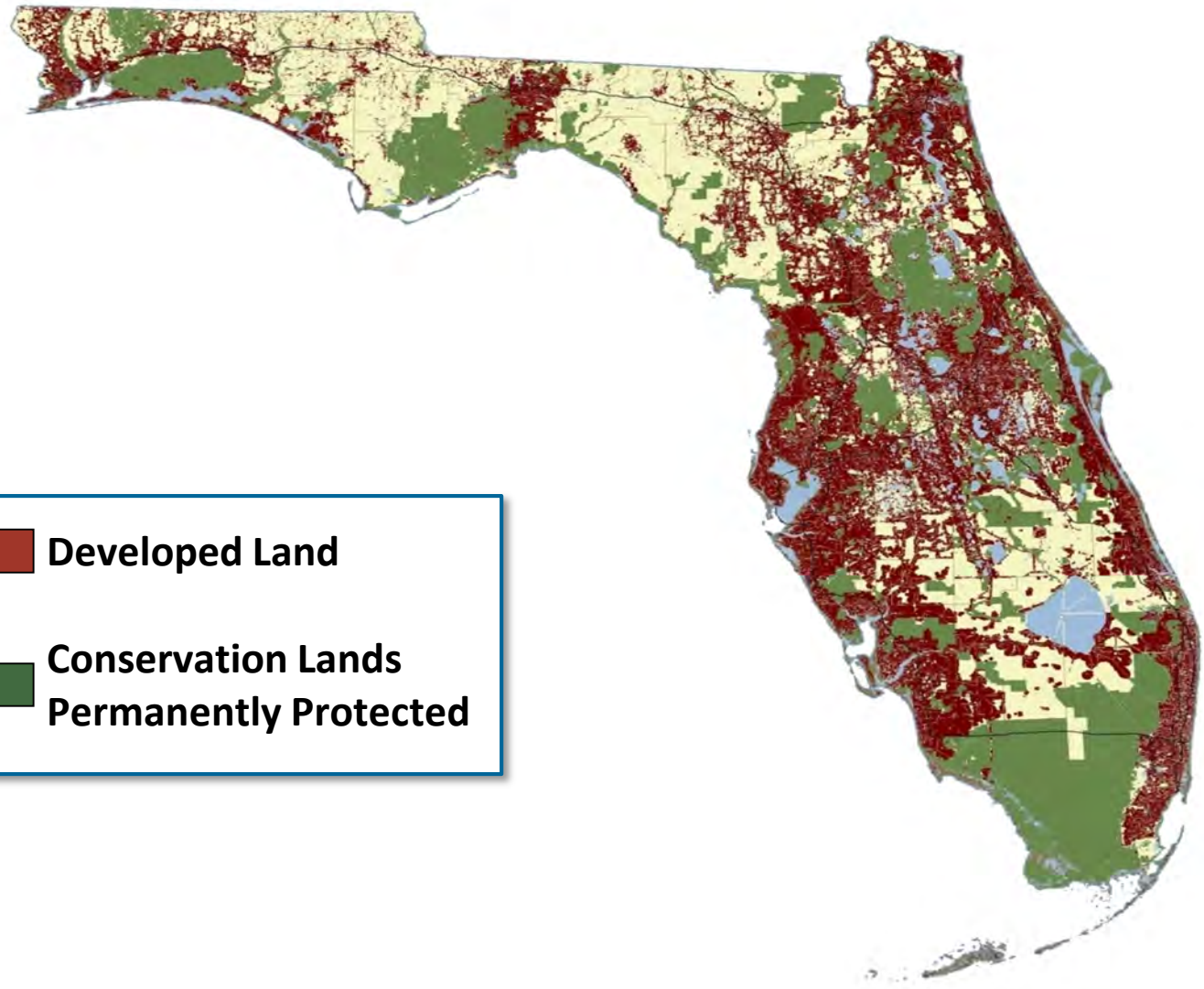
Page 103

2005 Developed Lands and Permanent Conservation Lands



	Developed Land
	Conservation Lands Permanently Protected

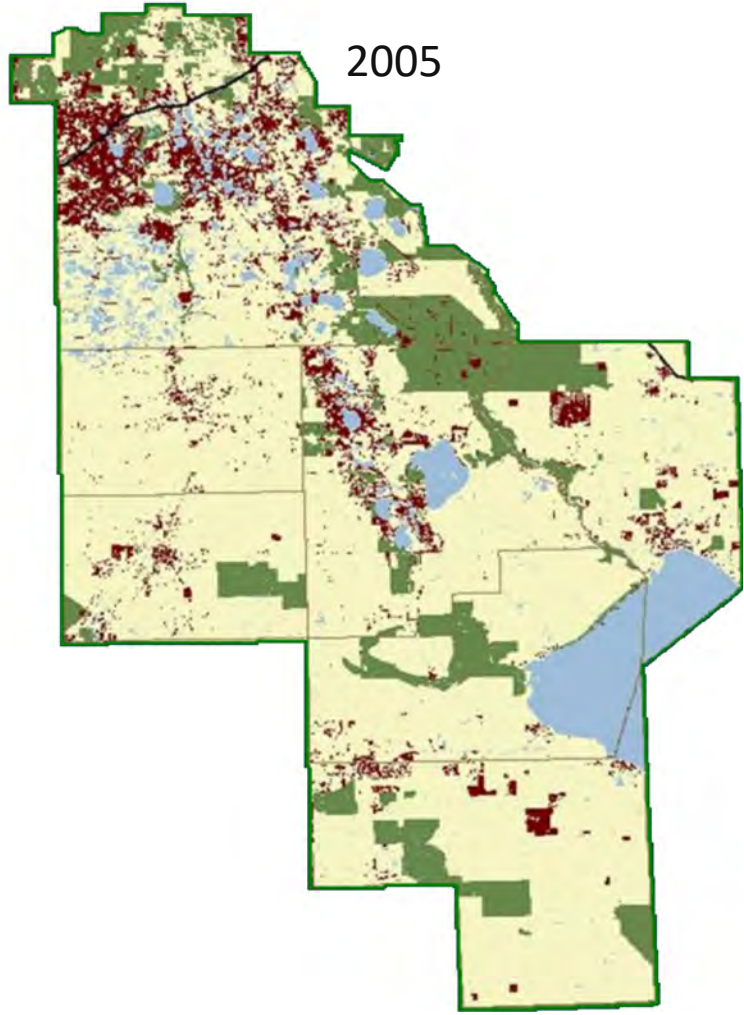
2060 Developed Lands and Permanent Conservation Lands



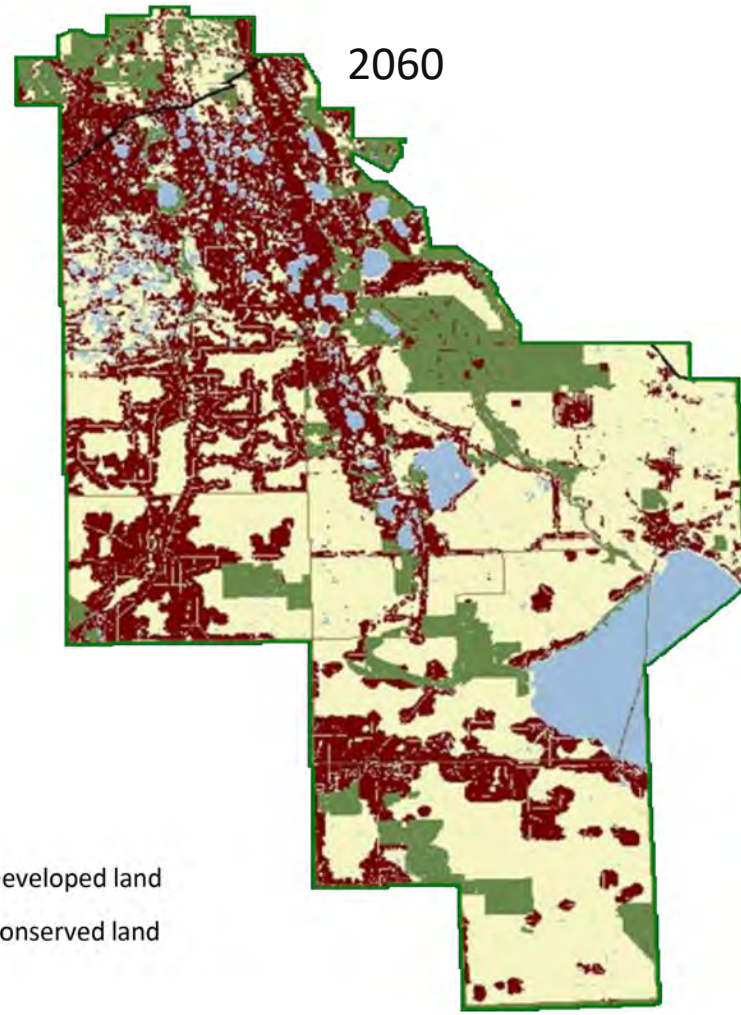
	Developed Land
	Conservation Lands Permanently Protected

Geographic Area	Population				Population Growth Rate, 2000 to 2010
	1980	1990	2000	2010	
DeSoto	19,039	23,865	32,209	34,862	8.2%
Glades	5,992	7,591	10,576	12,884	21.8%
Hardee	20,357	19,499	26,938	27,731	2.9%
Hendry	18,599	25,773	36,210	39,140	8.1%
Highlands	47,526	68,432	87,366	98,786	13.1%
Okeechobee	20,264	29,627	35,910	39,996	11.4%
Polk	321,652	405,382	483,924	602,095	24.4%
7-County Total	453,429	580,169	713,133	855,494	20.0%
Florida	9,746,961	12,938,071	15,982,824	18,801,310	17.6%
United States	226,545,805	248,709,873	281,421,906	308,745,538	9.7%

Where Will Our Future Take Us?



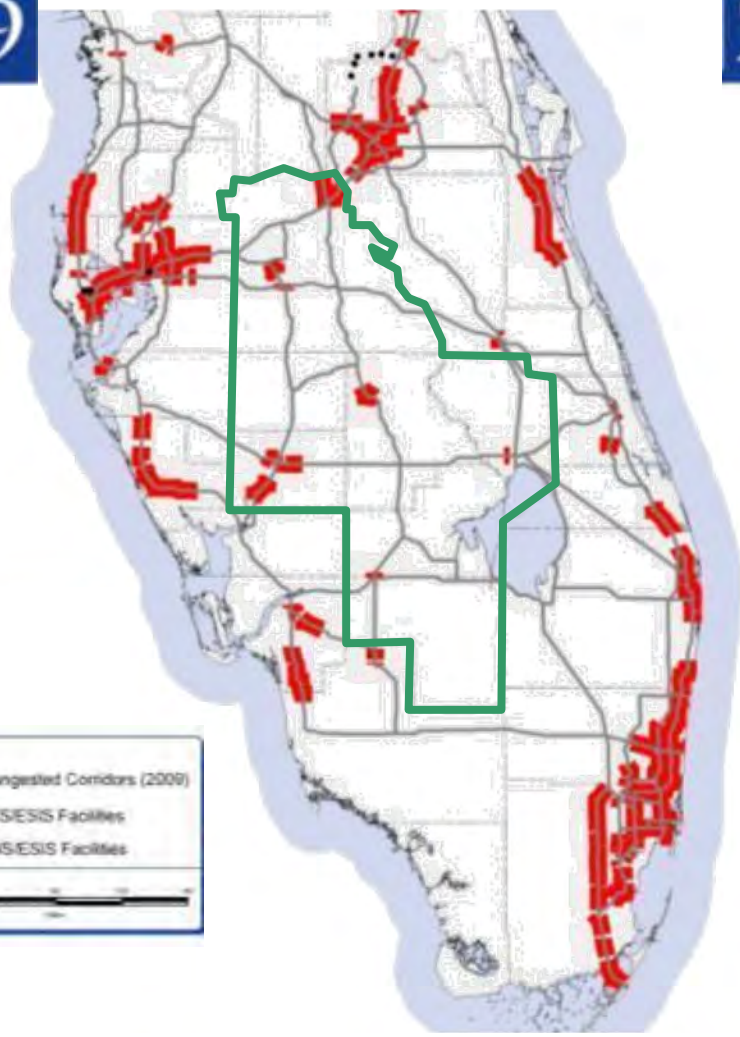
2005



2060

■ Developed land
■ Conserved land

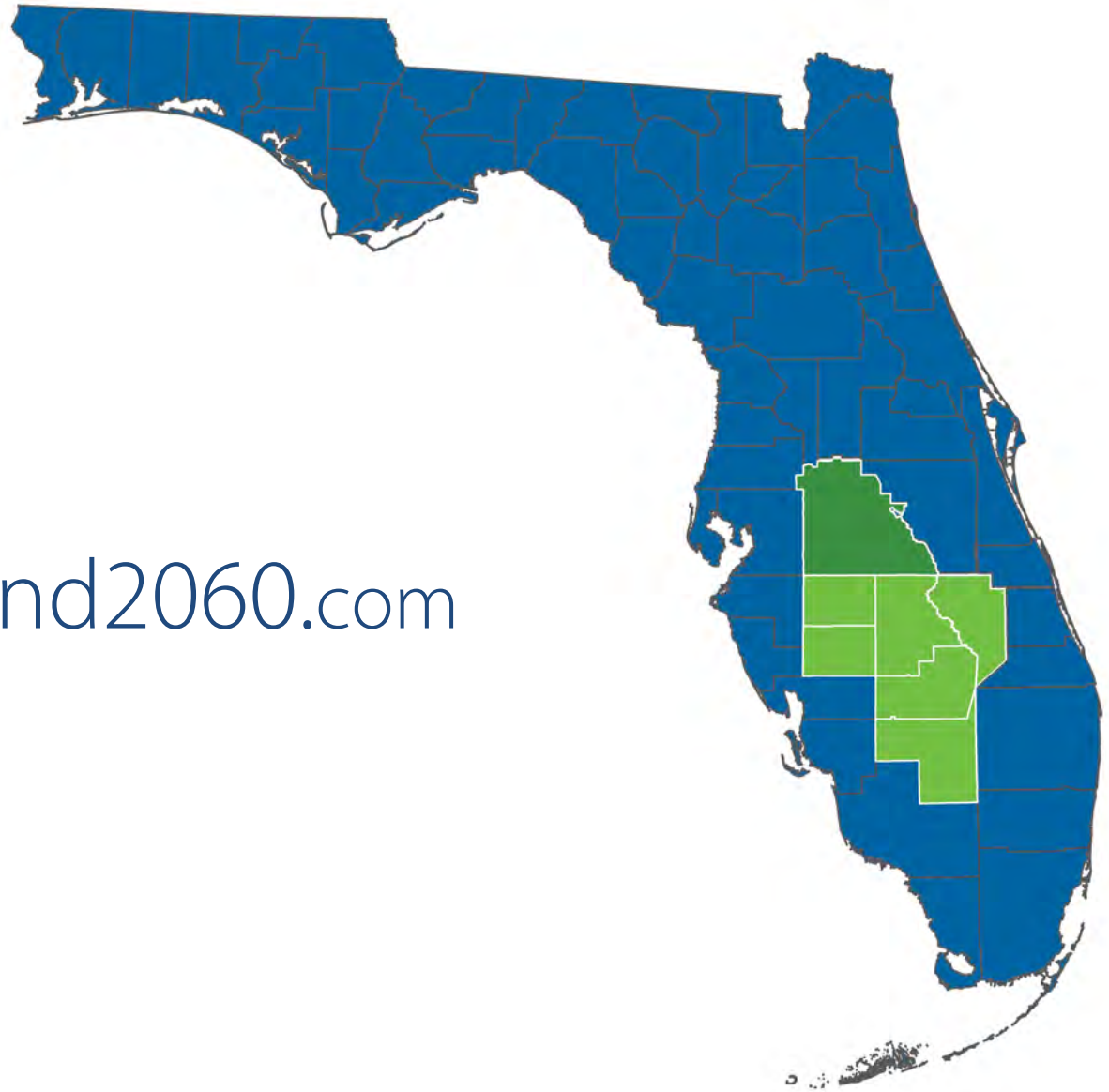
2009



2035



Heartland2060.com





Our Heartland Values



Our Water Resources



Respect for Agriculture



Our Communities



Future for Our Children



Education, Workforce, and Economic Development



Economic Diversification

Infrastructure to Support
Diversified Economy

Early Learning, K-16, Lifelong
Education

Environment and Natural Resources



Water

Sustainable and Viable
Natural Systems

Agriculture

Energy/Climate Change

Transportation & Land Use



Integrating with Natural
Resources Planning

Supporting Economic
Development

Ensuring Multimodal
Connectivity

Enhancing and Creating
Sustainable Communities

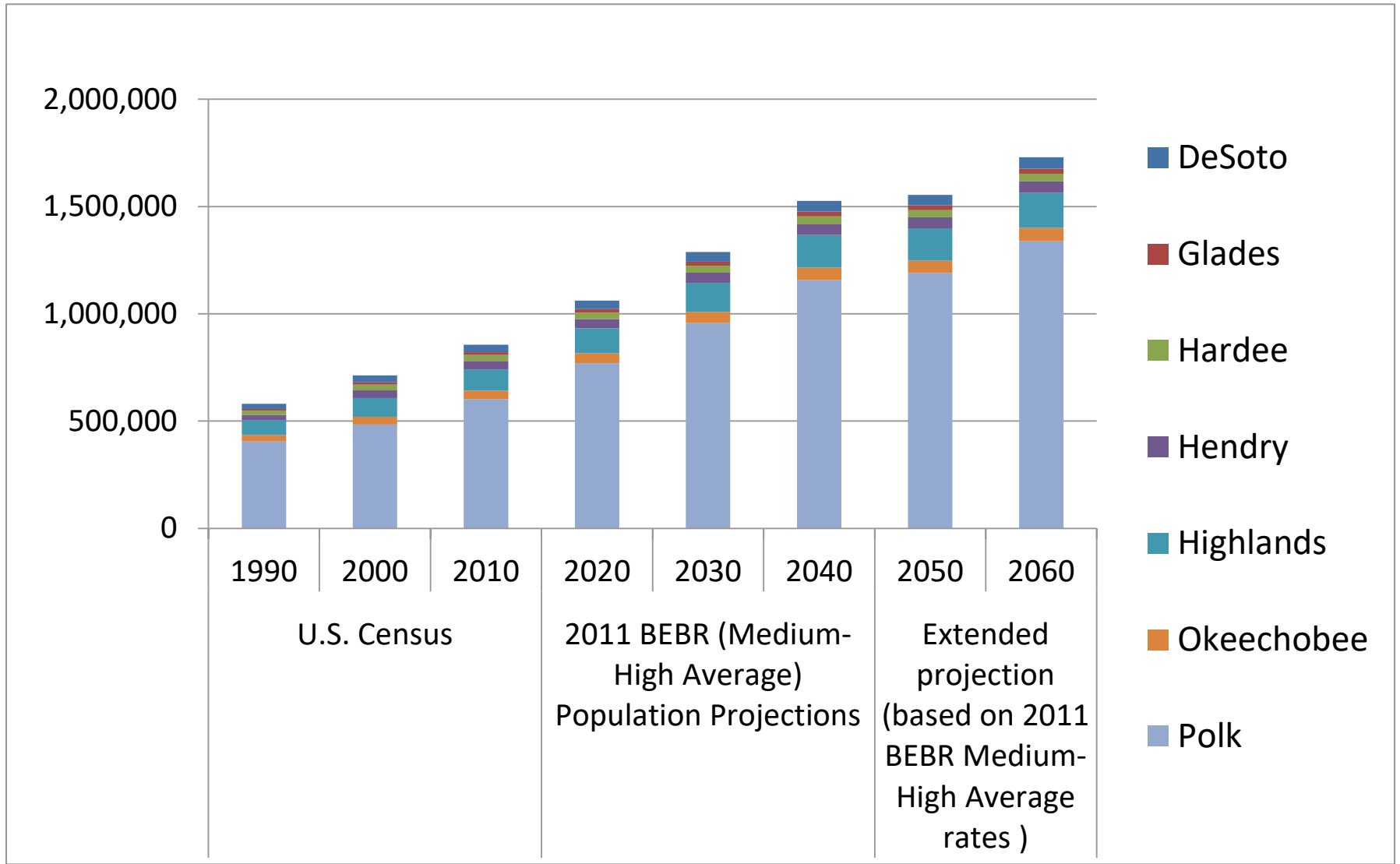
Community Resources



Health Care

Cultural Identity

Population Counts and Projections



Where we could be going...



**Economic
Opportunities**
(from the CEDS)

Regional Economic Engines as “Futures”

A future that...

Resembles the Present.

“If we continue with business-as-usual, including healthcare, natural resources, and ecotourism, then we can expect our future to look like...”



- Following current and historical trends in:
 - population
 - employment
 - land use
- Continuing economic prominence of agriculture, healthcare, mining, warehousing, ecotourism, and service industries

A future that is...

Focused on Energy.

“If we focus on supplying technologies and goods that create energy and become energy exporters, then we can expect our future to look like...”



- Developing an alternative fuels industry based on agriculture
- Manufacturing and installing renewable energy technologies
- Using high-tech energy technologies to become an energy exporter
- Energy efficiency and conservation technologies

A future that is...

Making & Moving Goods.

“If we focus on employment hubs for manufacturing, transportation, and warehousing, then we can expect our future to look like...”



- Using current and future industrial areas and logistics and trade networks
- Maintaining high capacity transportation networks for moving goods
- Enhancing distribution of air cargo
- Connecting ports
- Establishing advanced manufacturing and warehousing facilities

Topic areas:

Balance in urban land uses and conservation land uses

Transportation systems prevent fragmentation of natural systems

Infrastructure supports sustainable agriculture

Land use supports a sustainable economy and a sustainable environment

Creating multimodal corridors

Connecting the Heartland with other regions

Moving freight by rail, roads, and air

Moving people by rail, roads, and transit

Task Force:

Transportation & Land Use



Key Issues:

Integrating with Natural Resources Planning

Supporting Economic Development

Ensuring Multimodal Connectivity

Enhancing and Creating Sustainable Communities

Topic areas:

Land use to support 2060 economy

Moving people to support 2060 economy

Moving goods to support 2060 economy

Linking transportation and land use to support 2060 economy

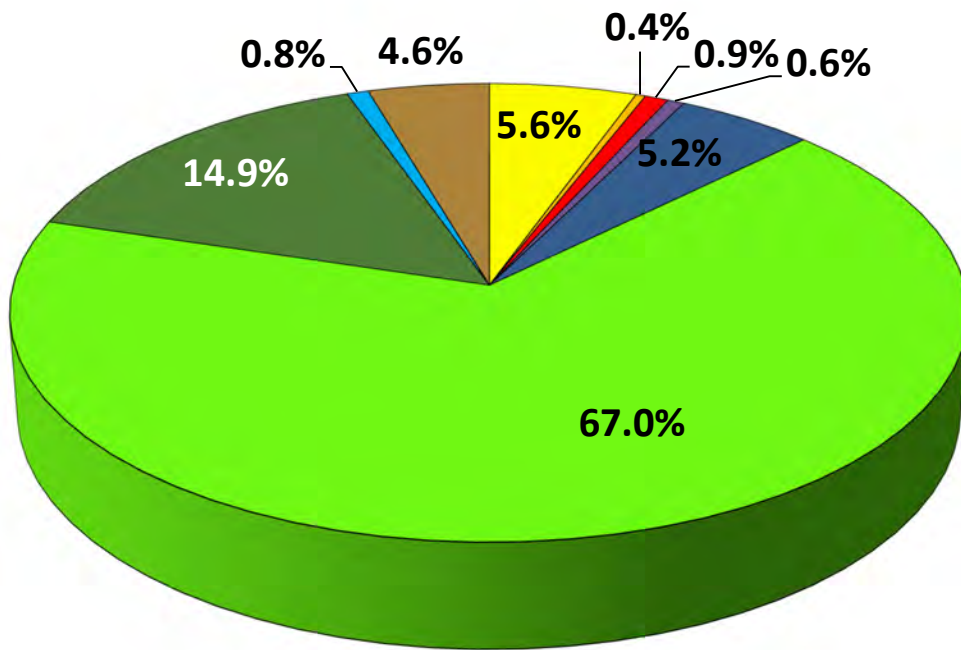
Promoting energy efficient land use patterns



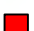






Supporting redevelopment

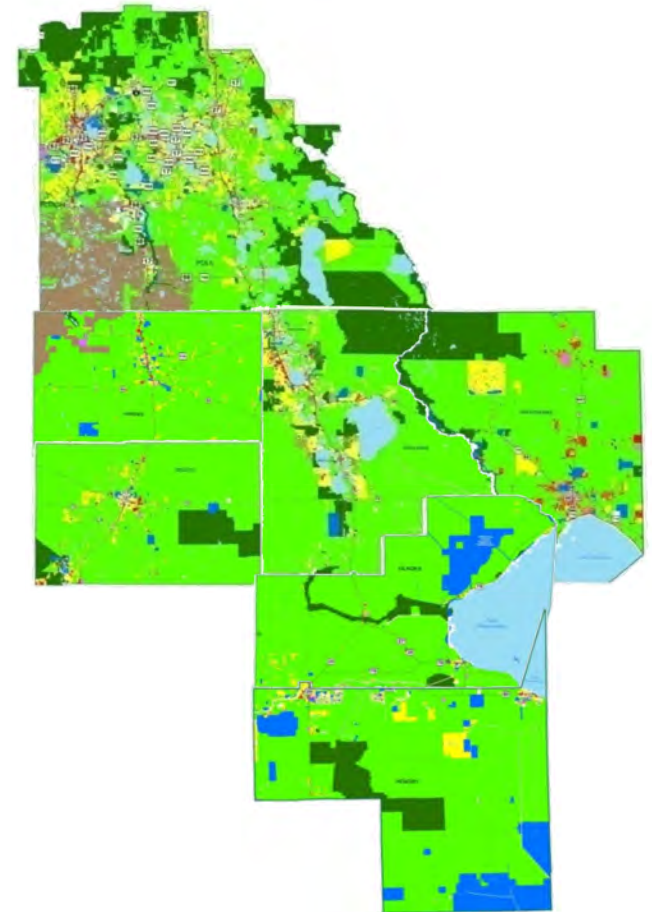
Housing affordability and sense of place within established communities

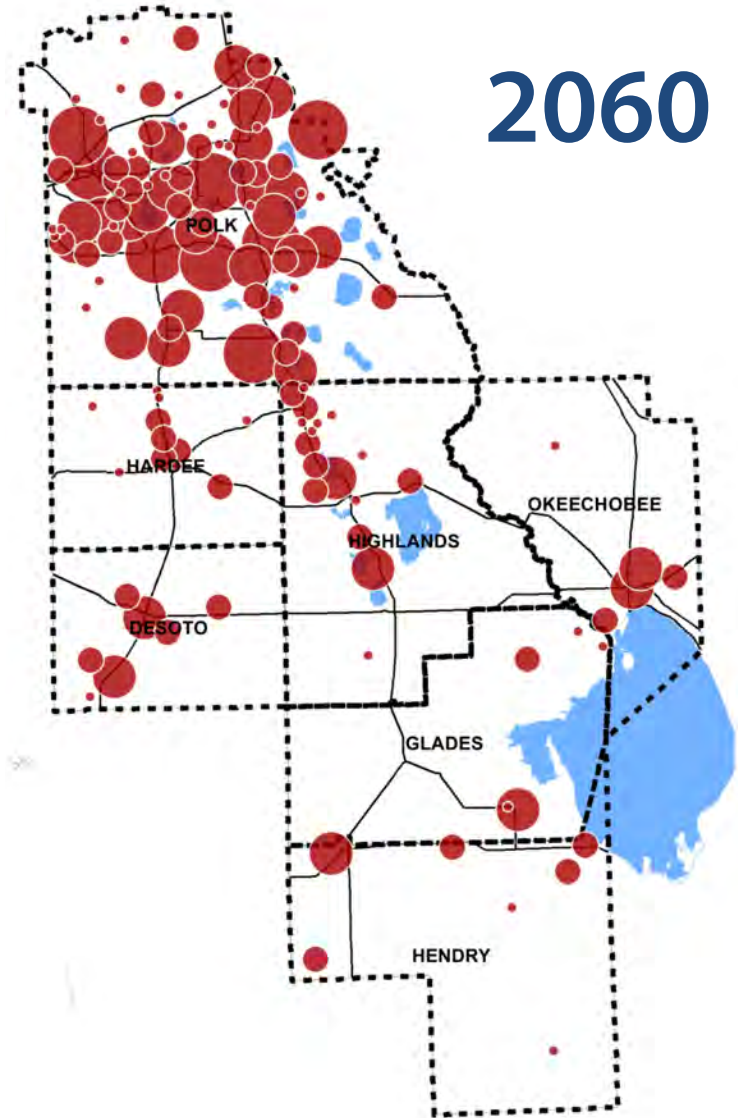
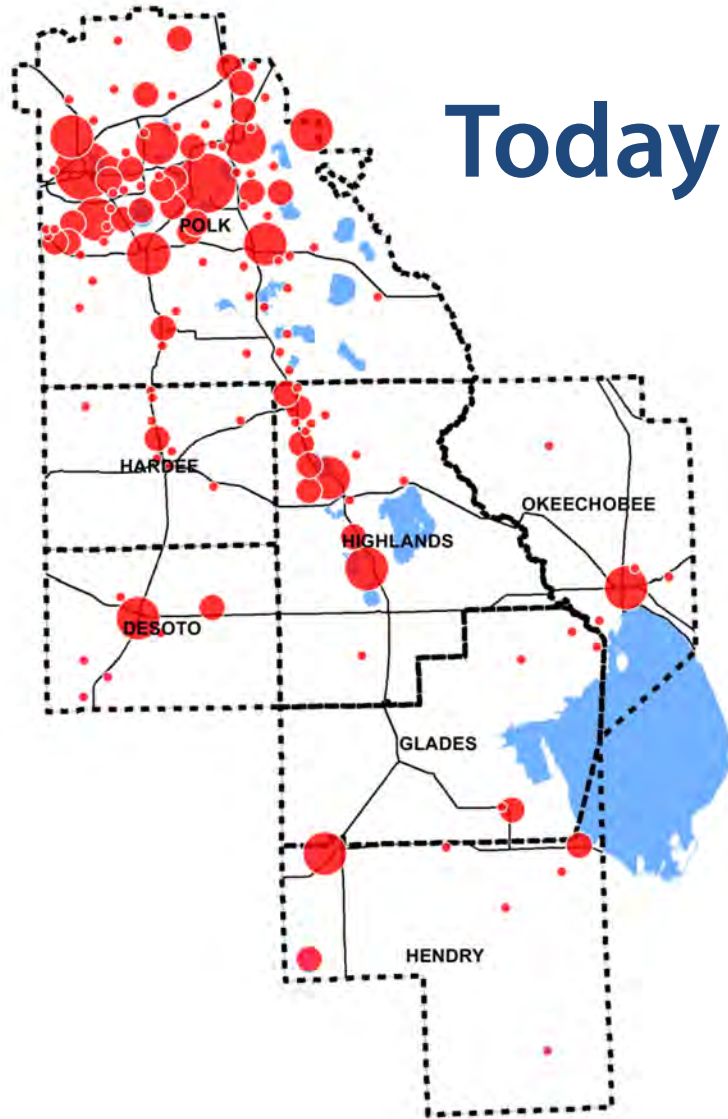
Improvements to serve the needs of new communities

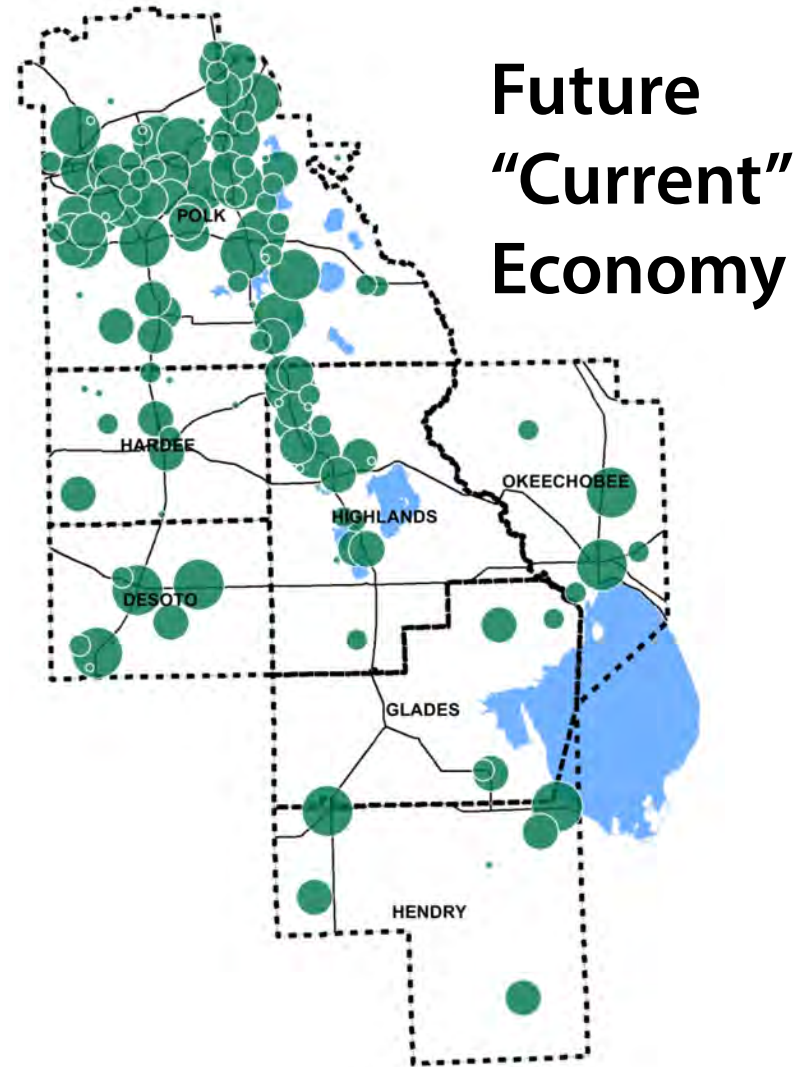
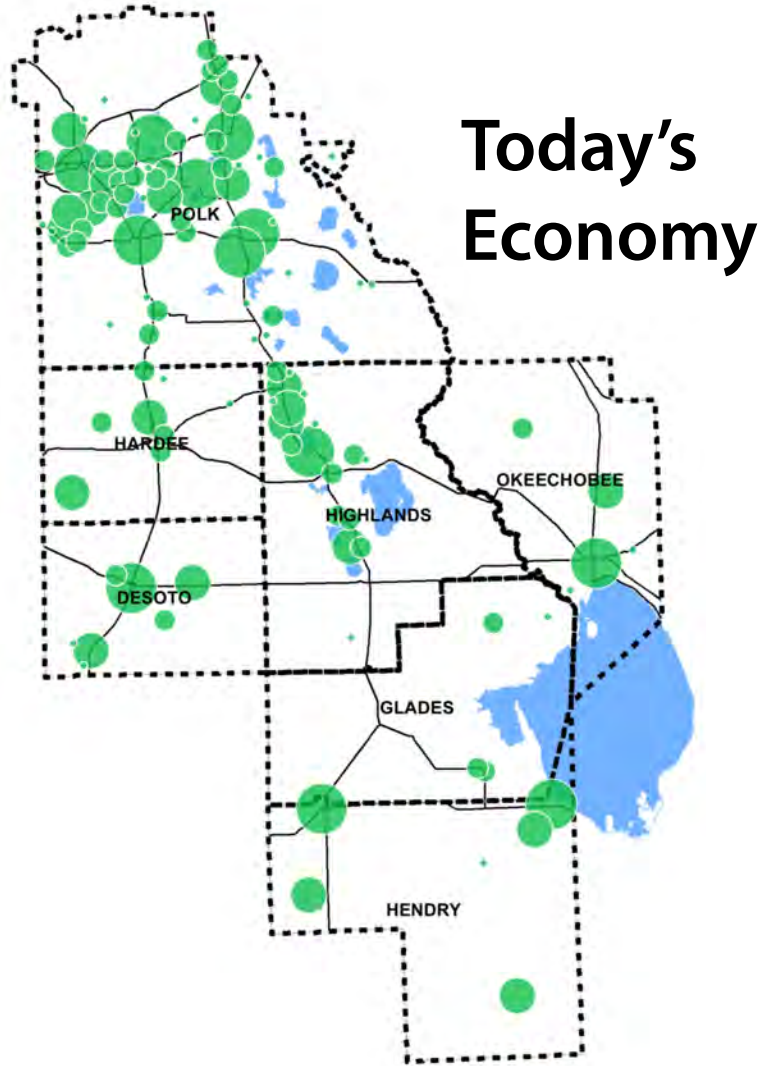
Existing Land Uses

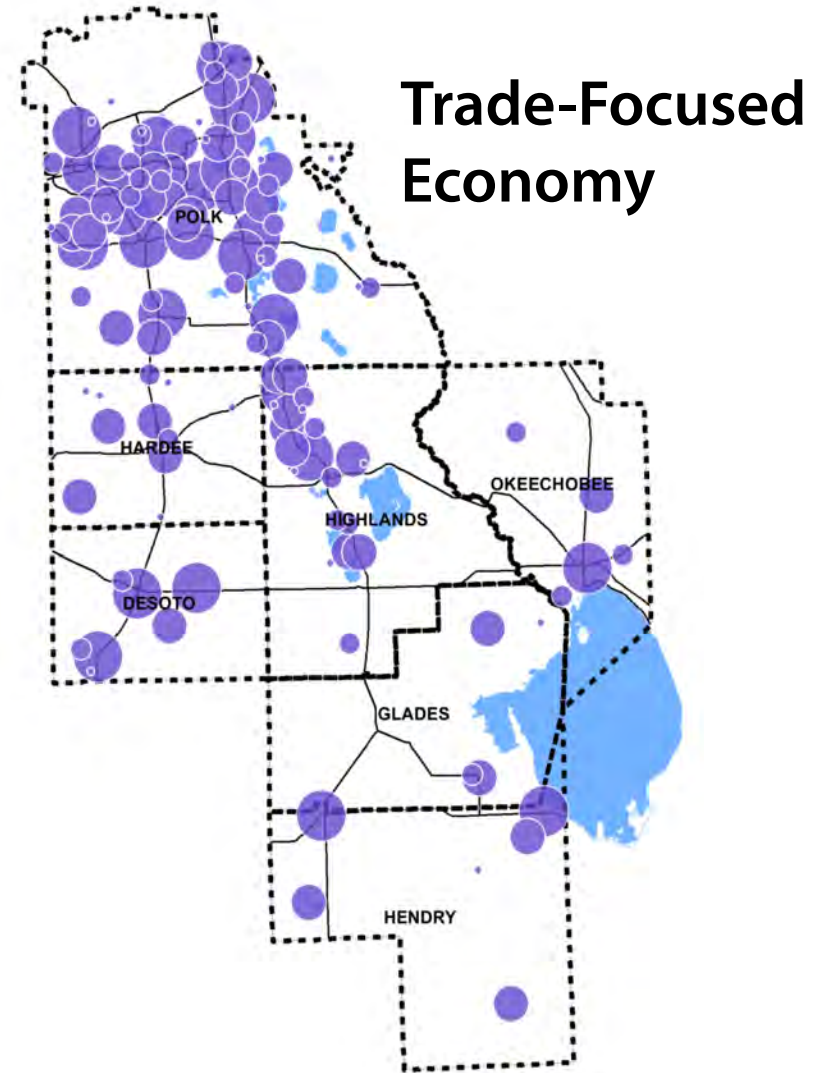
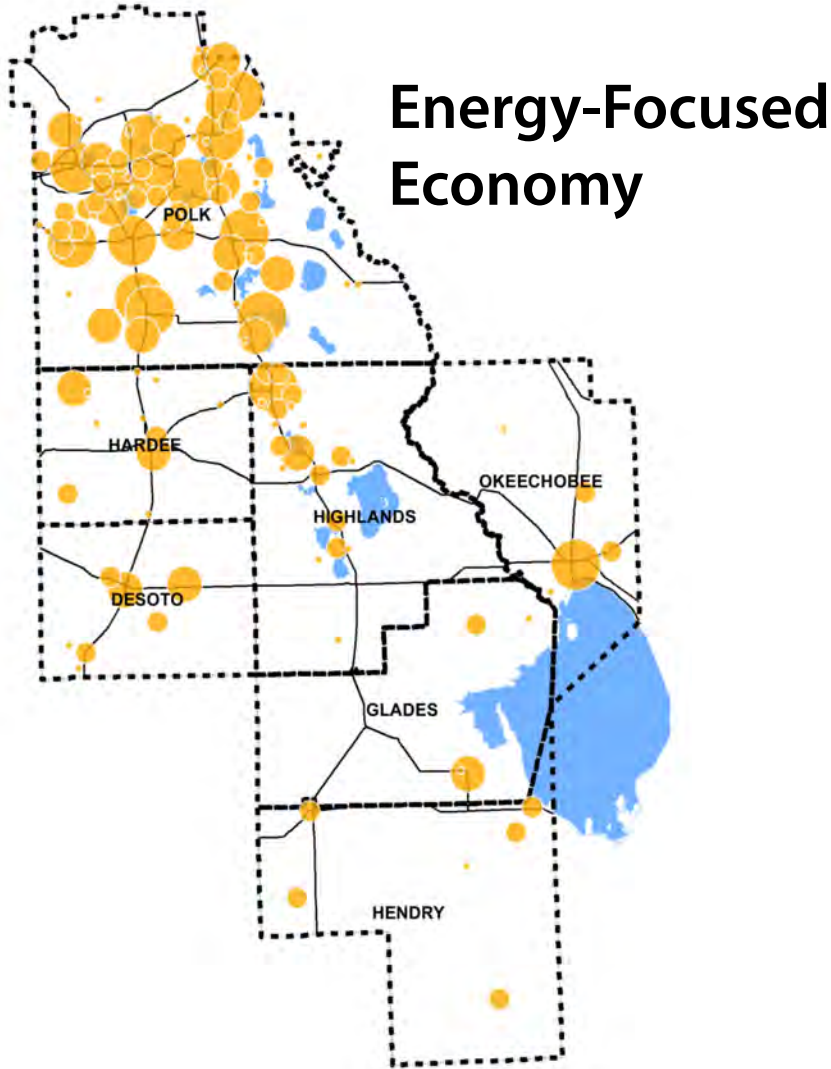


- | | | |
|---|---|---|
|  Single Family |  Multi-Family |  Commercial |
|  Industrial |  Institutional |  Agriculture |
|  Conservation |  Mixed-Use |  Mining |

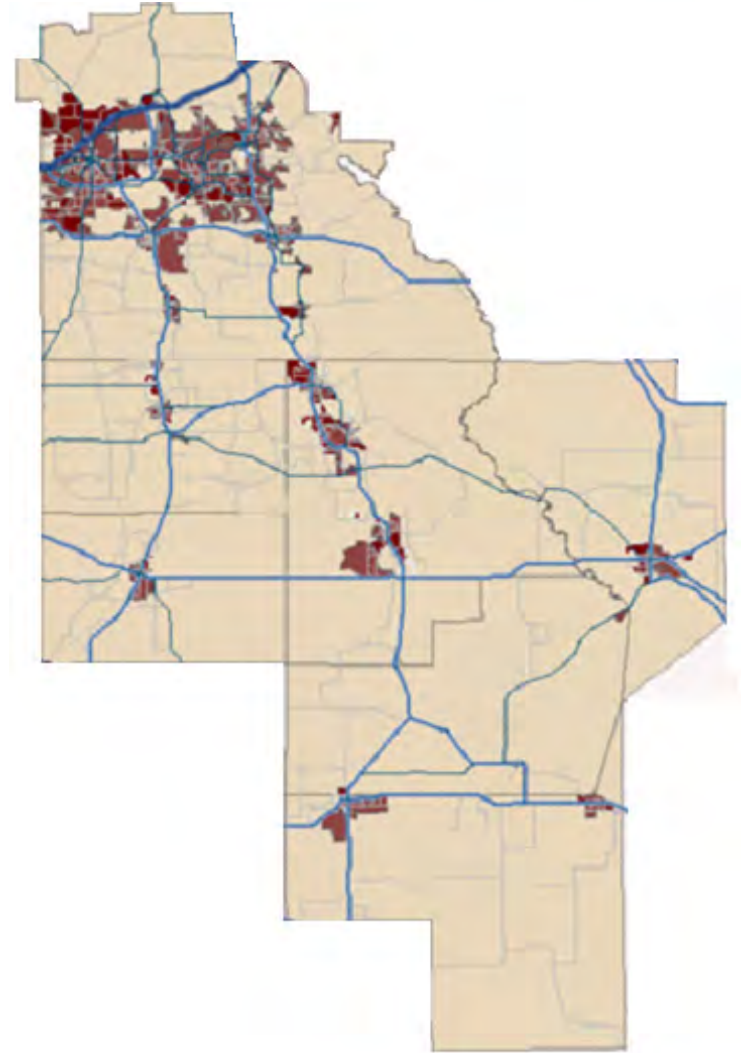








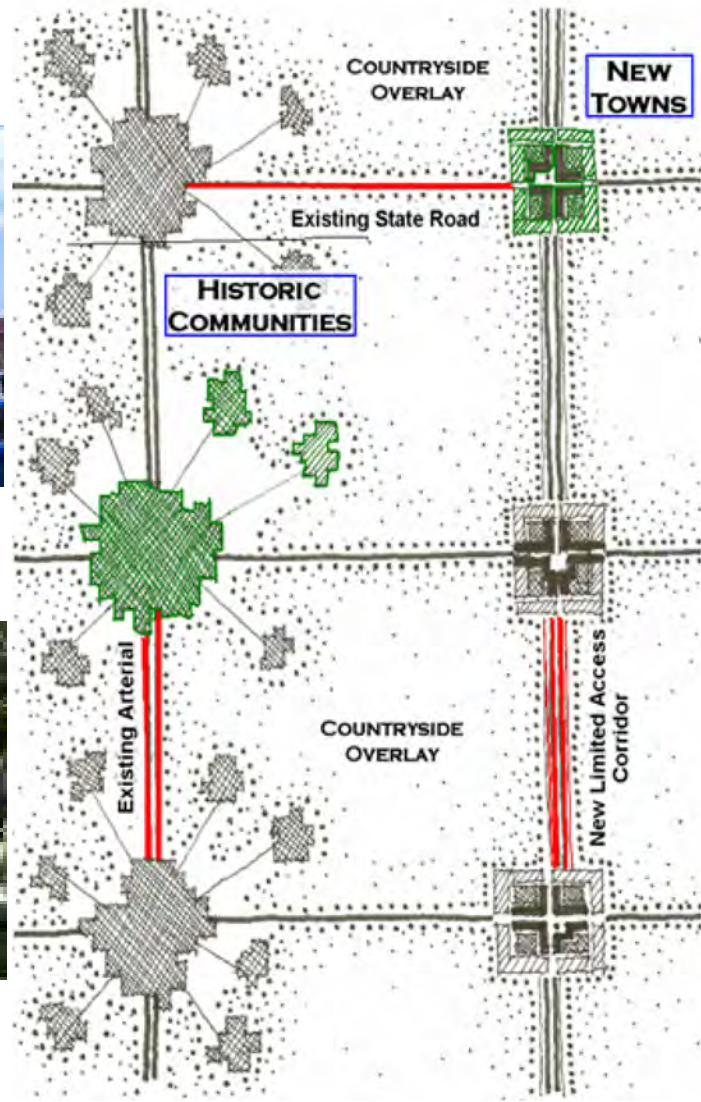
- Connections between growth and development and transportation access
- Planning land use and transportation to sustain viable natural systems
- Enhancing mobility while preserving community character
- Linking visioning to land use and transportation planning



Economic Diversity



Cultural Heritage



Multi-Modal Connectivity



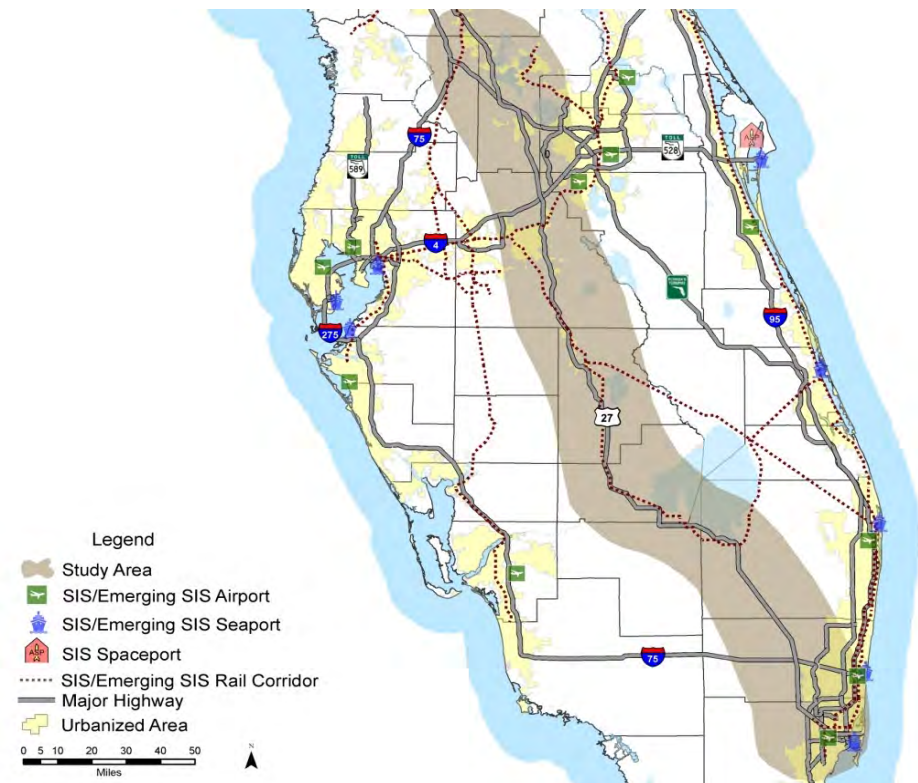
Natural Resource Protection



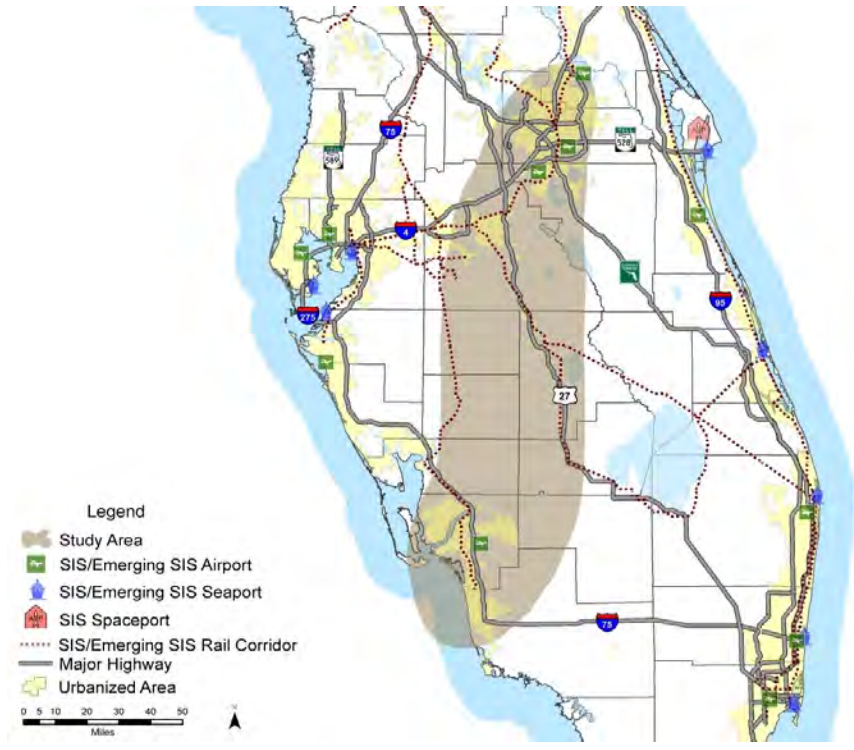
Southeast Florida-Heartland – Central Florida Study Area



- Potential for increased freight flows from Southeast Florida seaports and connections to proposed intermodal logistics centers
- **US 27** alternatives options include truck-only lanes, freight rail service, express lanes, etc.
- Heartland 2060 regional vision will help guide future decisions about US 27



- Examine need for more direct connection between Southwest, Central Florida
- Potential future need to provide alternative to I-75 for people and freight
- Heartland 2060 regional vision will help guide decisions about future growth and development



- Revitalize rural communities, encourage job creation, and provide regional connectivity while leveraging technology, enhancing quality of life and public safety, and protecting the environment and natural resources
- Names 3 new turnpike tolled corridors
- Commits an additional \$10 Million a year to SCOP, SCRAP, and the Transportation Disadvantaged Program
- Additional funds for workforce development (temporary)

- **Southwest-Central Florida Connector, extending from Collier County to Polk County.**
- Suncoast Connector, extending from Citrus County to Jefferson County.
- Northern Turnpike Connector, extending from the northern terminus of the Florida Turnpike northwest to the Suncoast Parkway.

Corridor benefits and issues addressed:

- Hurricane evacuation
- Congestion mitigation
- Trade and logistics
- Broadband, water, and sewer connectivity
- Energy distribution
- Autonomous, connected, shared, and electric vehicle 100 technology
- Other transportation modes, such as shared-use nonmotorized trails and freight and passenger rail
- Mobility as a service
- Availability of a trained workforce skilled in traditional and emerging technologies

- **A regional task force to guide corridor alignment with the following representation:**
 - The Department of Environmental Protection
 - The Department of Economic Opportunity
 - The Department of Education
 - The Department of Health
 - The Fish and Wildlife Conservation Commission
 - The Department of Agriculture and Consumer Services
 - The local water management district or districts
 - **A local government official from each local government within a proposed corridor**
 - **Metropolitan planning organizations**
 - **Regional planning councils**
 - **Conservation or community non-profit organizations**

Next Steps...

Governor signs/or vetoes

Task Forces appointed by August

Questions?

7) Sidewalk Inventory Update

Page 105

Heartland Regional Sidewalk Inventory

The sidewalk inventory database will be maintained and updated periodically. It will be used for:

- Bike / Pedestrian Planning
- Corridor Planning
- Safe Routes to Schools
- Performance based transportation planning process for the HRTPO

The data contains information including sidewalk length, sidewalk width, location information, construction material, etc.

8) Other Business

- a) Florida Transportation Plan Update
- b) 2019 Legislative Update

Legislative Update

- **Wireless Communications While Driving**
- **Autonomous Vehicles**
- **Transportation: Surtax**
- **Nonemergency Medical Transportation Services**
- **Motor Vehicle Racing**
- **Department of Transportation**
- **Creation the Multi-use Corridors of Regional Economic Significance Program**

9) Update on FDOT Activities

10) Next Meeting: August 21, 2019
