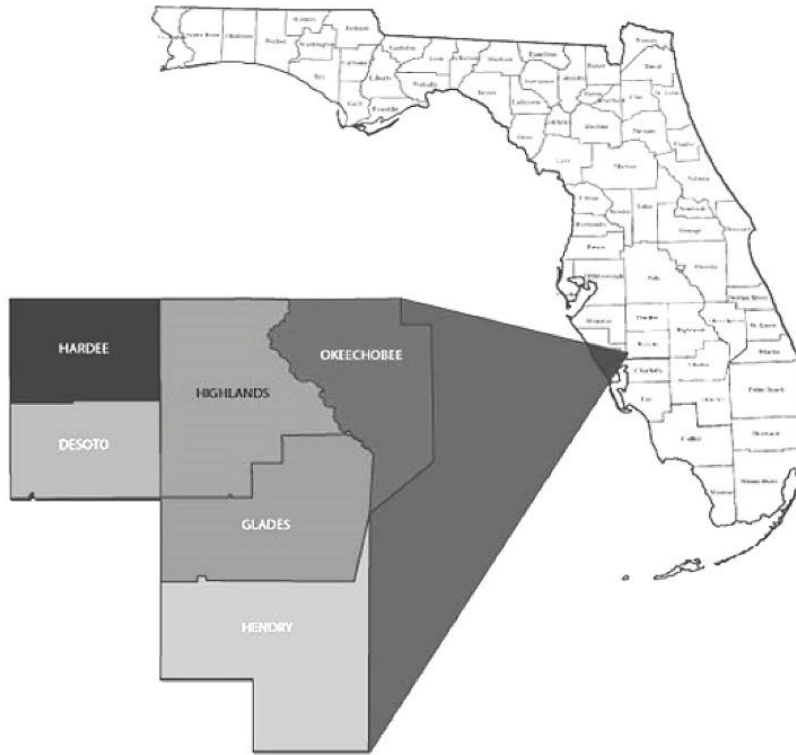


# Membership Apportionment Plan

2023 UPDATE



Prepared by:



# Heartland Regional Transportation Planning Organization

## Metropolitan Planning Area Boundary and Apportionment Plan

Adopted September 20, 2023

### TABLE OF CONTENTS

1. INTRODUCTION.....	1
2. METROPOLITAN PLANNING AREA BOUNDARY.....	1
3. POPULATION .....	3
4. MEMBERSHIP APPORTIONMENT PLAN METHODOLOGY .....	3
5. MEMBERSHIP APPORTIONMENT PLAN .....	3
6. RESOLUTION OF SUPPORT.....	4

This report documents the process that was undertaken to develop a planning boundary map and apportionment plan for the proposed Heartland Regional Transportation Planning Organization (HRTPO), which will include the Counties of DeSoto, Glades, Hardee, Hendry, Highlands, and Okeechobee, and the Cities of Avon Park and Sebring.

## **1. INTRODUCTION**

Federal laws and regulations require metropolitan planning organizations (MPOs) to be designated for each urban area with a population greater than 50,000 people [23 CFR 450.310(a), 23 USC 134(d)]. This designation is accomplished by agreement between the Governor and the affected units of local government. The federal rules allow the states and units of local government to largely determine the specific composition of the MPOs. In Florida, Section 339.175, Florida Statutes, provides the requirements for MPO membership composition and apportionment of the voting membership. Pursuant to these state and federal rules, the Heartland Regional Transportation Planning Organization was created in 2014.

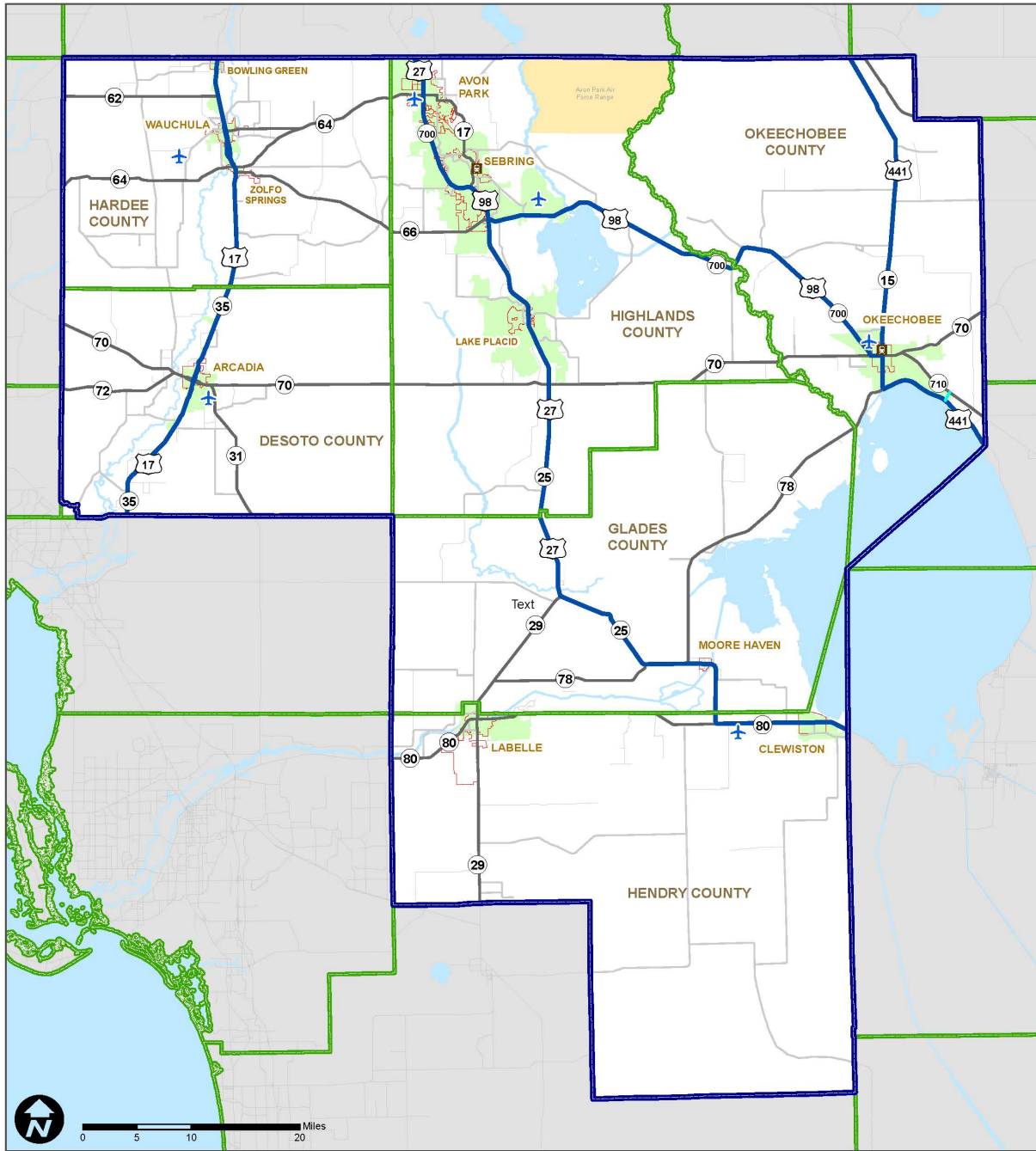
## **2. METROPOLITAN PLANNING AREA BOUNDARY**

The boundaries of the MPA are determined by agreement between the MPO and the Governor and, at minimum, encompass the entire existing urban area (as defined by the Census Bureau) plus the contiguous area expected to become urban within a 20-year forecast period (23 CFR 450.312).


“The Florida Heartland counties of DeSoto, Glades, Hardee, Hendry, Highlands and Okeechobee form the South-Central Economic Region of Florida. These historically rural counties have collectively experienced double-digit growth in the past two decades: a 45% increase from 1990 to 2010. As a result of this growth, the Sebring-Avon Park area of Highlands County was designated as an urbanized area based on the 2010 US Census. This designation triggered the formation of the transportation planning organization.

The linkage of these counties is economic, environmental, cultural and collaborative. Through a history in agriculture and mining, with ranching and small business centered on the abundant natural resources including lakes and health care as a major employer, the Heartland counties have worked together in changing times. As the region looks to the future through its Heartland 2060 partnerships it prepares for increasing urbanization and infrastructure investment, it is key that a multimodal transportation system to serve citizens and move goods is built. The population of the HRTPO is 250,688 as of 2020. A map of the MPO’s planning area boundary is provided in Figure 1.”

# Heartland Regional TPO Metropolitan Planning Area



### Legend

- |   |                                |   |              |   |                   |
|---|--------------------------------|---|--------------|---|-------------------|
|  | HRTPO/PL Boundary              |  | US Highways  |  | Airports (Public) |
|  | County Boundaries              |  | State Roads  |  | Amtrak Stations   |
|  | City Limits                    |  | County Roads |   |                   |
|  | FDOT-FHWA Smoothed Urban Areas |  | Railroads    |   |                   |



Date Approved: Nov. 17, 2014

Document Path: S:\HRTPO\Map\Misc\Map\MPO Map\HRTPO\_MAR14.mxd

## POPULATION

The table below show changes in population in the Heartland Regional Transportation Planning Organization area between the 2010 Census and the 2020 Census.

*Table 1: MPA (HRTPO) Population*

HRTPO	2010 Population	2020 Population
<b>Total</b>	253,399	250,688

### 4. MEMBERSHIP APPORTIONMENT PLAN METHODOLOGY

Currently, the Heartland Regional Transportation Planning Organization board is comprised of 12 members, as shown in Table 2, representing 8 municipal governments and FDOT. The composition of the board was agreed to by the MPO members in a membership apportionment plan approved by the Governor in 2014. The proposed Heartland Regional Transportation Planning Organization Board membership in this apportionment plan is 12 voting members and 1 non-voting members (Table 3).

There are no proposed changes to the membership of the Heartland Regional Transportation Planning Organization.

### 5. MEMBERSHIP APPORTIONMENT PLAN

**Table 2: Membership Apportionment Plan**

County/City	County/City Population 2020 *	% of total population	Number of Voting Members	Weight Per Vote
<b>DeSoto</b>	33,976	13.55%	1.00	13.55%
<b>Glades</b>	12,126	4.83%	1.00	4.83%
<b>Hardee</b>	25,327	10.10%	1.00	10.10%
<b>Hendry</b>	39,619	15.80%	1.00	15.80%
<b>Okeechobee</b>	39,644	15.81%	1.00	15.81%
<b>Highlands(Unincorporated) + Lake Placid</b>	80,848	32.25%	5.00	6.45%
<b>Avon Park</b>	9,658	3.85%	1.00	3.85%
<b>Sebring</b>	10,729	4.27%	1.00	4.27%
<b>Total</b>	250,688	100%	12	-

\*US Census Population 2020



**RESOLUTION 04-2023**

**A RESOLUTION OF THE HEARTLAND REGIONAL TRANSPORTATION PLANNING ORGANIZATION SUPPORTING THE ADOPTION OF THE MPO MEMBERSHIP APPORTIONMENT PLAN.**

**WHEREAS**, the Heartland Regional Transportation Planning Organization is the agency designated to conduct a continuing, coordinated, and comprehensive transportation planning process in (insert counties and cities); and

**WHEREAS**, Section 134 Title 23 of the United States Code requires the designation of MPOs in urban areas, as defined by the United Census Bureau of the Census; and

**WHEREAS**, the Heartland Regional Transportation Planning Organization met on September 20, 2023 to review its voting composition and agreed on the composition presented herein; and

**WHEREAS**, Section 339.175(4)(a), Florida Statutes, requires the Governor to review the composition of the Metropolitan Planning Organizations membership in conjunction with the decennial census.

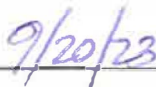
**NOW, THEREFORE, BE IT RESOLVED**, that the Heartland Regional Transportation Planning Organization approves the submittal of a MPO Membership Apportionment Plan to the Governor's Office.

PASSED and DULY ADOPTED by the Heartland Regional Transportation Planning Organization on September 20, 2023.


**Signed:**

  
\_\_\_\_\_  
Noey Flores, HRTPO Chair

**Date:**

  
\_\_\_\_\_  
9/20/23

**Attest:**

  
\_\_\_\_\_  
HRTPO Staff

  
\_\_\_\_\_  
Reviewed by HRTPO Attorney